

MULTI TROLLEY STANDARD 6.0

Assembly and Use



Multi Trolley

Smart • Simple • Safe

Contents

- 1x Frame with 4x locknut
- 4x Wheel
- 2x Fixed support poles 42cm
- 2x Adjustable support posts 76cm
- 2x Mounting brackets for adjustable support posts with handle

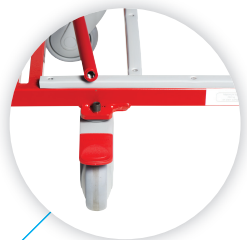


Assembly

For quick and easy assembly, follow these instructions:



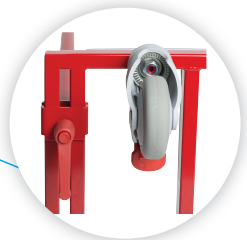
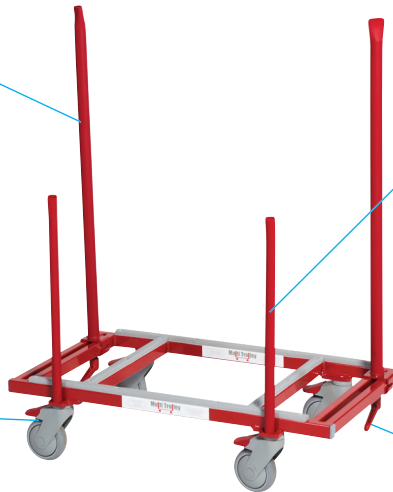
Attach mounting plates either side of frame.



Ensure these are properly mounted and tightened.



Tighten locknut with a 19 mm wrench.

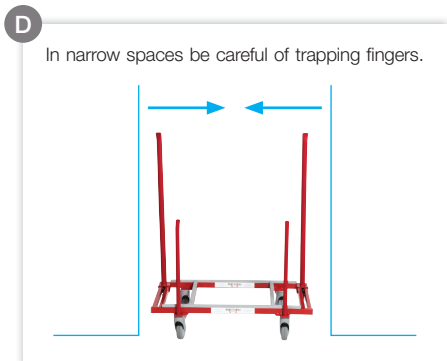
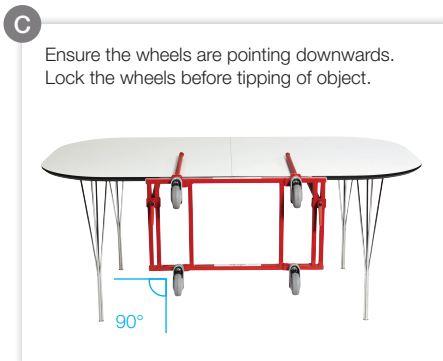
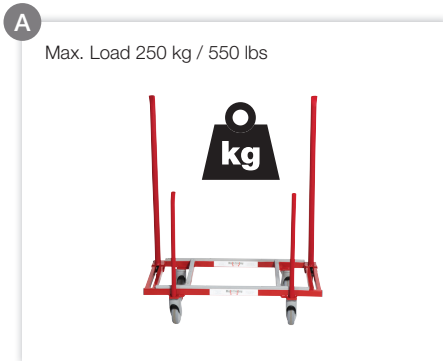


Turn handle to adjust post. Press button to adjust handle positioning only.

Keep assembly and user manual for future reference.

Use

Before use check mountings of wheels, fixed support poles and adjustable support posts. For secure use observe the following points below:



MULTI TROLLEY STANDARD 6.0

Technical Specifications

- Height: 780 mm
- Width: 420 mm
- Adjustable posts: 760 mm
- Fixed posts: 420 mm
- Weight: 12 kg / 26 lbs

MULTI TROLLEY STANDARD 6.0

Applications

Recommended post length

	Fixed pole 42 cm	Adjustable post 56 cm	Adjustable post 76 cm	Adjustable post 96 cm
Desk	✓		✓	
Table	✓		✓	
Conference table, large	✓			✓
Conference table, small	✓		✓	
Bed	✓		✓	
Bed, King Size	✓			✓
Sofa	✓	✓		
Whiteboard, large	✓			✓
Whiteboard, small	✓		✓	
Door		✓*		✓
Panel		✓*		✓
Folding table		✓*		✓
Cabinet, bookshelf, etc.	<i>No posts or poles required</i>			

* Replaces Fixed poles 42cm



Nastagatan 2, 702 27 Örebro, Sweden
 info@multitrolley.com | multitrolley.com
 Tel. +46 (0) 19-27 27 32



www.facebook.com/multitrolley



<https://twitter.com/multitrolley>



<http://instagram.com/multitrolley>



<https://www.youtube.com/user/themultitrolley>